

PARISH PROFILE

Emmanuel Episcopal Church

2410 W. Lexington, Avenue | Winchester, KY 40391

eecwinchester.com





ALL ARE WELCOMED – INVITED – AFFIRMED

People of Color

LGBTQIA+

Drag Queens

Partnered and Single

Disabled

Families and Children

Young and Old

Our Homeless Neighbors

The Alcoholic and Addicted

Believers and Those Questioning Faith

Anyone Who Desires a Spiritual Home

(borrowed from Calvary Episcopal Church, Louisville KY)

Table of Contents

Welcome	4
Our Journey	5
Our Worship	9
Our Ministries	10
Ministries	10
Outreach	12
Parish Life	12
Our Church Home	13
Staff	13
Lay Leadership	13
Vestry	13
Facilities	14
Memorial Garden	14
Our Finances	15
Budgets	15
Financial Giving	15
Our Diocese	15
Our Community	16
Reflections on our Parish Identity	17
Strengths and Areas for Growth	18
What We Seek in a Rector	19
Closing	19



Welcome

Thank you for taking the time to consider Emmanuel Episcopal Church as your next parish home. We are a small congregation (60-70 members) with an average weekly in-person attendance of 26 and a few more online. We are in Central Kentucky in the [Diocese of Lexington](#). Despite our size, we play an important role in Winchester/Clark Co. as the only fully affirming place of worship. Our members are also heavily involved in the community and as a parish we work to partner with community organizations to support all of Winchester/Clark Co.

Our acreage and facilities located on the western edge of the city limits of Winchester on US 60 provide us ample space for parish/Diocesan functions as well as community use.

Our congregational priorities include:

- Working to renew and revitalize the community around the church by building coalitions with partners that share this vision and commitment.
- Deepening our sense of connection to God and one another through stronger worship experiences.
- Helping members discern their gifts and equip them for ministries that are a good fit for them.

We trust that you are prayerfully considering God's call and hope the information contained here and, on our website, helps guide your decision.

Our Journey: History to Present Day

In 1895 Emmanuel Church became a part of the Diocese of Lexington and attained parish status in 1951.

The current sanctuary was built in 1967 and held its first service on Christmas Eve. The neo-colonial building, cruciform in shape and with a 66-foot-high centered steeple, has glazed brick headers set in Flemish bond style, stained glass windows from the original church, and seating for 200.

In 1970, Boy Scout Troop 56 began meeting at Emmanuel and continues to be sponsored by our parish today. Emmanuel's Daughters of the King also began that year. In 1975 classrooms and office space were added (Bush Hall) and the outside was bricked and connected to the sanctuary by a walkway and cloister.



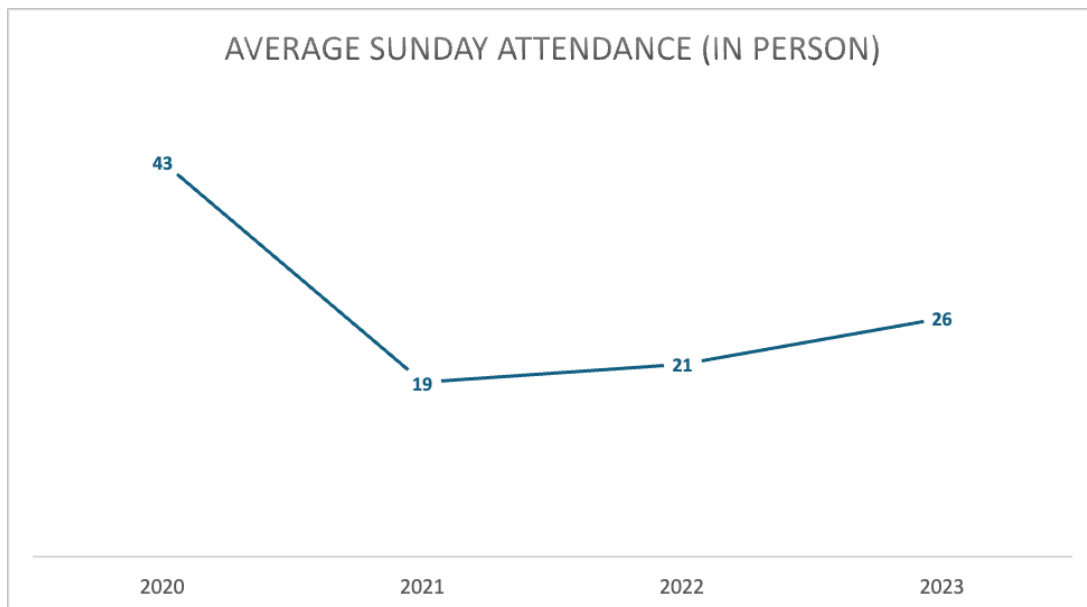
Another parish hall, McCready Hall, was built in the mid-1980's and shortly after Emmanuel's Memorial Garden was built.

Emmanuel saw continued growth and community involvement throughout the 1990s and early 2000s. Following an ambitious capital campaign in 2003, Emmanuel further expanded facilities to better support our growing congregation and community involvement. The sanctuary was enlarged and a new parish hall, the Parish Life Center, was built.

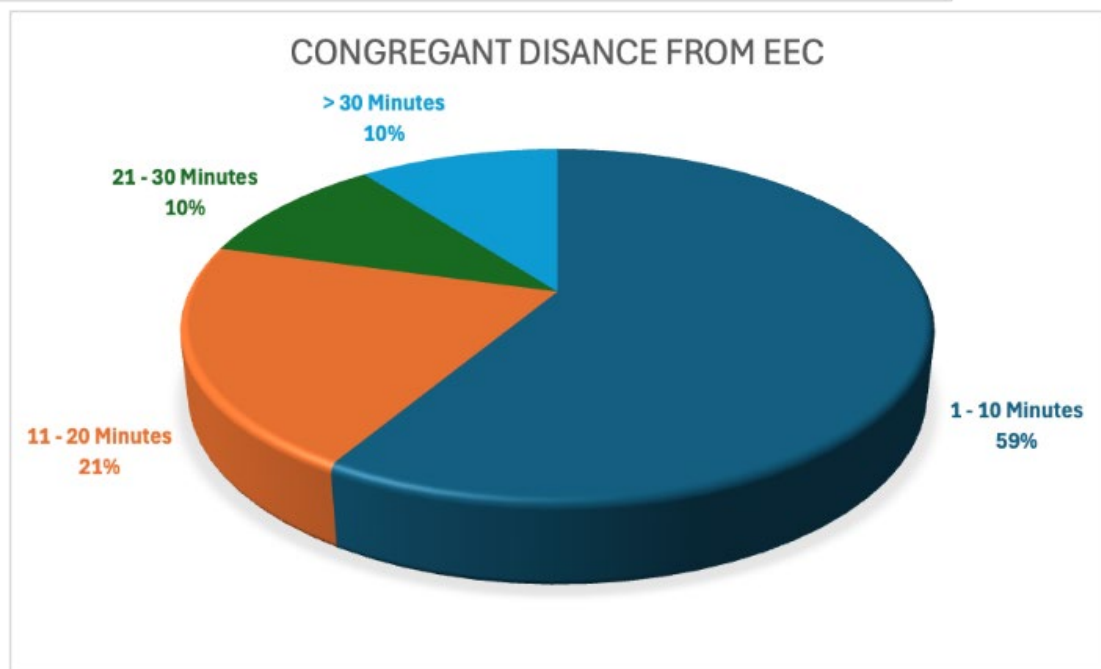
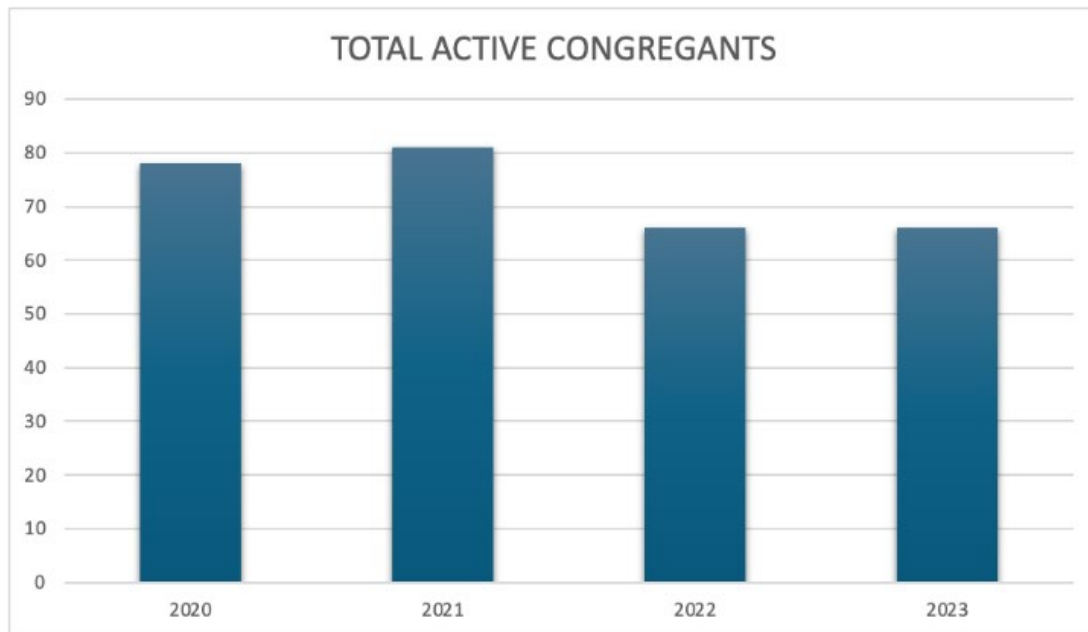


Following this expansion, the congregation experienced some wrenching events, culminating in a dissolution of pastoral relationship, and subsequent grief. During a period of recovery and focus on internal health, the congregation continued to emphasize outreach and commitment to a strong Episcopal presence in the area. Sound fiscal management and a second capital campaign were followed by a donation from the Taylor family resulting in all debt on the Parish Life Center being paid. The PLC is now known as the Taylor Center.

Covid-19 era social distancing practices had a negative impact on average Sunday in-person attendance; however, our number of active congregants remained steady thanks to live streaming services.

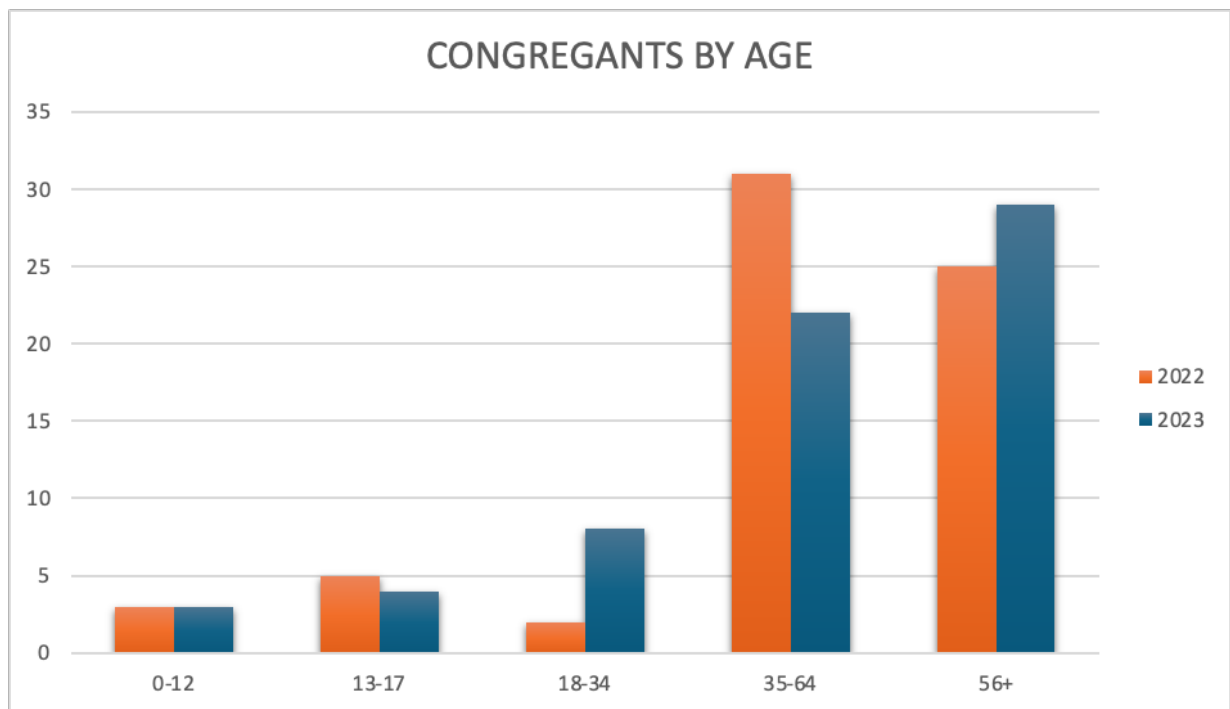


We are a church that prioritizes work that renews and revitalizes the community by building coalitions with partners that share this vision and commitment. In 2023 Emmanuel Episcopal Church's Weekly Sunday Attendance was 26. During that same year a total of 20 people participated in a weekly volunteer outreach ministry. This demonstrates our commitment to stewardship as time and talent, not simply treasure. Our members are present and engaged in our local community and approximately 59% of communicants live within 10 minutes of Emmanuel.



We are seeking someone who can support us in converting our high community involvement into an increase in weekly attendees.

We are also seeking opportunities to attract additional families with and/or without children as well as those who are single.



Emmanuel's expansive campus and welcoming spirit continues to allow us to play an integral part in supporting various activities and ministries for the community. More details about Emmanuel's current worship, fellowship, outreach, and community involvement are available throughout this profile.



Our Worship

Like many places of worship, Emmanuel experienced significant changes to our worship during and following the Covid-19 pandemic. From March 2020 through early Fall 2021 Emmanuel's primary services took place via Facebook. During this time, we were also able to celebrate some services outside in our Memorial Garden or Pavilion areas.

We resumed regular services indoors and in-person in early Fall 2021 with many changes to our structure to support health and well-being. We have continued broadcasting our weekly service on our Facebook page.

We celebrate Holy Eucharist Rite II from the 1978 Book of Common Prayer each Sunday at 10:30 am. Rite I is typically used during Lent and options from the Book of Occasional Services as preferred by the celebrating clergy.



We have a small but dedicated choir and are blessed to have the leadership of a wonderful organist and choir master. We primarily sing from the Hymnal 1982 while the choir's offertory hymns could come from Wonder, Love and Praise or many other appropriate selections.

Post Covid, we maintain a limited involvement of laypersons in the service. We currently utilize one crucifer/chalice bearer to assist the celebrating clergy as well as a lay reader. Additional chalice bearers and/or acolytes are used as needed.

We are formal in our worship style yet progressive in our adherence to the Gospel. Emmanuel is a liturgical church in an area that is predominantly evangelical. We are aware that the formality of our worship may be unfamiliar to our visitors, and we are exploring ways to make our service more inviting to those unfamiliar with the Episcopal church.

Our Ministries

Ministries

In the fall of 2022, Emmanuel began a ministry to those experiencing homelessness. We partner with the Recovery Community Center located on Main Street, which is operated by the Clark County Health Department. This agency assists and supports individuals suffering from substance use disorders, provides referrals and transportation to inpatient treatment, peer support, jail support, expungement clinics, and a clothing bank, among other services. Their site also hosts numerous recovery meetings each week and hosts social events for those in recovery. Prior to beginning this ministry, parish members participated in a meeting with community members about ways Emmanuel could provide some support for people without housing. Many clients served by the Recovery Community Center experience homelessness.



Being mindful of our abilities, in consultation with the agency director, we determined that we could provide twenty-five bagged lunches every week, delivering them to Recovery Community Center for distribution. Congregants may choose to be involved by donating our monthly featured item, making sandwiches after Sunday worship, bagging the lunches, or delivering lunches on Monday morning. This ministry has been well received, and most church attendees

have been involved at some point and often regularly in this ministry.



Emmanuel is also happy to host five community meetings per week for various recovery and support groups. Alcoholics Anonymous, Narcotics Anonymous and the National Alliance on Mental Illness all hold standing meetings in our various facilities.

We also have a history of showing love and inclusion for LGBTQIA+ members of our community. For three years Emmanuel has hosted a Pride Prom for youth who may not be comfortable at their own school proms. Our most recent Pride Prom took place in May 2024 and we welcomed 30 attendees. We were also the only church represented at the first annual Winchester Pride and Inclusion Festival in October 2023. Should the festival continue, we plan to participate.



Every year during the week prior to Christmas, Emmanuel's campus hosts a community wide event known as [Operation Happiness](#). We work with [Clark County Community Services](#) and many other community organizations to provide a food basket, coat, hat and gloves for as many as 1000 families. Parish members are regularly represented among those working to prepare for and facilitate the event.



Outreach

Taylor Fund



We are incredibly fortunate to have additional resources for ministries and outreach beyond our doors. The Taylor Fund is an endowment with restrictions limiting its proceeds to the use of outreach for the local community, diocesan, national, and international agencies and programs meeting the needs of unserved or underserved people. While having this fund is truly a gift, we are firm in our commitment of also giving time and talent to parish ministries and within the wider community. We have found that to simply issue a check deprives us of the relationship of true ministry with others.

Parish Life

Members of Emmanuel enjoy spending time together. We have participated in having meals together, hosting cook outs, coffee and fellowship hours following our Sunday Service, and numerous other events. We are exploring new ways to be together following the pandemic. We have found that for visitors to feel welcomed and included it is important to have opportunities to become acquainted with individual members of the parish. We have also enjoyed opportunities for Christian formation in which we study and learn from each other. We care for each other by hosting events including receptions following funerals, birthday celebrations, and celebrations of special occasions. We are eager to have new experiences and opportunities to be together.



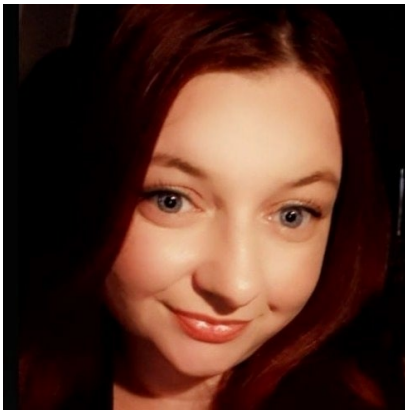
Our Church Home

Staff

Emmanuel currently employs two part-time staff members.

Administrative Assistant: Jessica Music

Jessica first came to serve Emmanuel in 2016. She took a brief break for a different job and then returned as our admin in 2021. She has also served as the Administrative Assistant and Sunday School teacher at the Episcopal Church of Our Savior in Richmond, KY. In total, she has served in the Diocese of Lexington for 11 years. Jessica is typically in the office on Mondays and Thursdays, and always available via email. Jessica has three children who are 9, 12, and 15 and they currently attend Eastside Community Church in Richmond.



Jessica Music



Linda Berg

Organist and Choir Director: Linda Berg

Linda has worked as an Organist, Composer and Music Director for 45 years. She has worked in many denominations and with various theater groups in Colorado, Minnesota and Massachusetts. Emmanuel is truly blessed that Linda chose to move to central KY in 2014 to be closer to family.

Lay Leadership

Emmanuel is blessed to have a very involved lay membership. In addition to our current six-person vestry (listed below) we have several volunteers who actively work to support parish operations and ministries. This includes buildings and grounds, music, hospitality, Altar Guild, finance and administration, pastoral care, and outreach. We are blessed with consistent and engaged members.

Vestry

Emmanuel's Vestry consists of six members who are elected to serve rotating three-year terms. Elections take place at our Annual Meeting in early January. The Vestry elects a Sr. Warden, Jr. Warden, Clerk, and Treasurer at their first meeting of the calendar year. Those individuals all serve

one-year terms but may be reelected. The Vestry meets monthly. Emmanuel's Vestry also elected to serve as the Search Committee during this current search process.

Therese Smith, Sr. Warden
Mark Davis, Jr. Warden
Renee Wallace, Clerk
Billy Bennett
Clay LaBreche
Sabrina Puckett

Holly Davis has served as Emmanuel's Treasurer since 2013. Her leadership and the expertise of our Finance Committee support Emmanuel in our efforts to be responsible stewards of our financial resources.

Facilities



Emmanuel sits on 7.7 acres on the western edge of Winchester in Clark Co., Kentucky. We are on a major East/West Highway, (US 60) and situated directly across from Clark Regional Medical Center. Our property contains four buildings and a garage. The sanctuary is approximately 4,500 sq ft., with seating for 200+. Bush Hall consists of 1,900 sq ft and contains our offices and administrative space. McCready Hall is our primary parish hall used for meetings, events, and gatherings and is about 2,500 sq ft. McCready contains a kitchen, five classrooms and two bathrooms. The Taylor Center is a two-story structure consisting of 14,000 sq ft and contains a full gymnasium, walking track, commercial kitchen, nine classrooms, four bathrooms, and an attached covered outdoor pavilion. This space is primarily used by Scout troops 56 and 56-2, Cub Scout Pack 56 as well as Venturing Crew 56, and other large community functions. The garage used for storing equipment, etc. is 1,000 sq ft.

Memorial Garden

Our Memorial Garden is directly adjacent to the sanctuary on its west side. It consists of a garden, altar, and a walking path covered by an arbor with numerous stone dedications marking the interment location of ashen remains of parishioners.



Our Finances

Emmanuel has two endowments. The Bush Fund totaled approximately \$1.4 million on December 31, 2023 and is used to support operating expenses of the parish that are not covered by contributions from parishioners. The Taylor Fund is set aside to be used only for community service needs. On December 31, 2023 it totaled approximately \$875,000. This year Emmanuel has budgeted \$28,000 to donate to local, state, and international interests.

Budgets

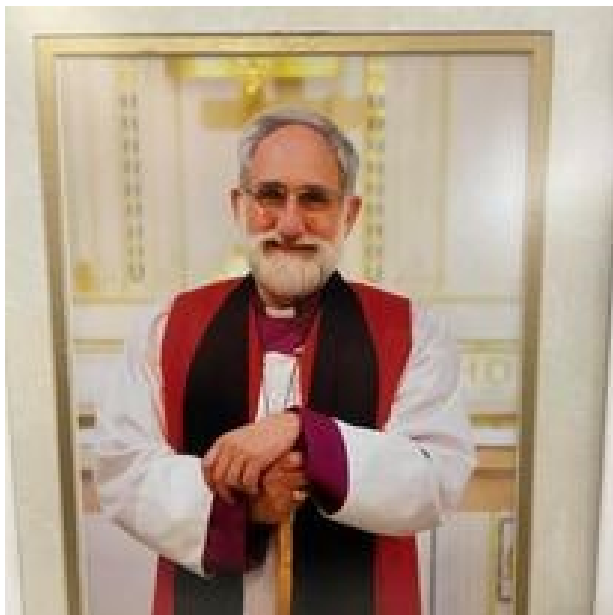
Emmanuel is debt free. There are several funds set aside which cover expenses for: maintenance of our memorial garden, altar guild, a small sabbatical fund, and a fund for large capital improvements. In 2024 pledges will cover approximately 64% of the total operating budget. Most of the balance of the budget will be covered with monies from the Bush Fund. Additionally, Emmanuel currently has a significant cash balance in the General Fund as a safety net for unexpected expenses.

Financial Giving

Emmanuel defines stewardship as more than just financial giving as demonstrated throughout this profile. Still, financial giving and an annual financial stewardship campaign are essential to the ongoing operation and ministries of Emmanuel. In 2023 there were 23 giving units pledging \$111,260. In 2024 there are 16 giving units pledging \$100,760.

Our Diocese

The Diocese of Lexington (diolex.org) has more than 6000 members in 36 parishes serving 64 counties in the eastern half of the state of Kentucky. The Diocese of Lexington was formed from the Diocese of Kentucky in 1895.



On November 1, 2019, at a Special Convention of the Diocese of Lexington, The Rt. Rev. Mark Van Koevering was elected as the VIII Bishop of Lexington. On Sunday, June 5, 2022, at Christ Church Cathedral, The Episcopal Diocese of Lexington celebrated The Seating of the Right Reverend Mark Van Koevering, Eighth Bishop of The Diocese.

Our community

Winchester/Clark Co.

Clark County, Kentucky (www.clarkcoky.com) was formed in 1793 and named for Revolutionary War hero General George Rogers Clark. Winchester (winchesterky.com) is the county seat.

As of the 2020 census, Clark County's population was 36,463 and the city of Winchester just slightly more than 19,000. The racial makeup of our community is 93.6% white, 4.77% Black or African American and 1.19% of any race identified as Hispanic or Latino.



We are part of the Lexington-Fayette Co. KY Metropolitan Statistical Area and sit approximately 16 miles east of Lexington. We are about a 1.5-hour drive east of Louisville, KY and south of Cincinnati, OH. Winchester/Clark Co is located on I-64, a

major east-west interstate and approximately 10 miles from the major north-south route of I-75. The Mountain Parkway opens Eastern KY areas such as Prestonsburg, Hazard, Pikeville, the Daniel Boone National Forest and Red River Gorge. Regionally, we are an easy day trip (less than 400 miles) to major metropolitan areas such as St. Louis, MO, Chicago IL and Atlanta, GA.

To learn more about local Winchester tourism and activities please check out <https://visitwinchesterky.com/>. Here you can read about our local soft drink Ale-8 and the origin of beer cheese. Additionally, you can learn about our connection to Kentucky's original pioneer, Daniel Boone.

The climate of central KY is four distinct seasons. Fall is often considered the most beautiful thanks to the vibrant colors of changing leaves and the comfortable temperatures and dry weather conditions. Winters are considered mild with the chance of some major (defined as a few inches or more) of snow at least once per season. Spring varies greatly in temperature with regular precipitation and significant growth and blooming of vegetation. Summer is warm in June and reaches higher temperatures (daytime highs in the 90s) in July and August. This is a perfect time to enjoy one of Kentucky's many lakes.

Reflections on our Parish Identity

Emmanuel lies in the transformation quadrant as it relates to congregational climate.

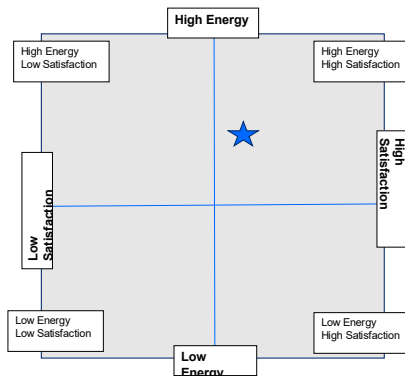
The Vestry is also attentive to the fact that we have a high percentage (69%) of Holy Cow survey respondents who are “on the fence” when asked “On the whole, I am satisfied with how things are in our church?”

Some of this can be attributed directly to the uncertainty of the clergy search process. This group of “swing voters” (to use election terms) emphasizes the importance of clergy leadership choice. Emmanuel’s Vestry understands this importance and is committed to a

prayerful search process that will lead to our next clergy person who encourages and shepherds us as we worship, serve and live into our identified congregational priorities.

Additionally, we identify as “progressive” in our theology yet “settled” on the flexibility scale which places Emmanuel solidly in the “Paraclete” quadrant for culture.

Congregational Climate: Energy & Satisfaction



TRANSFORMATION QUADRANT

High Energy/High Satisfaction

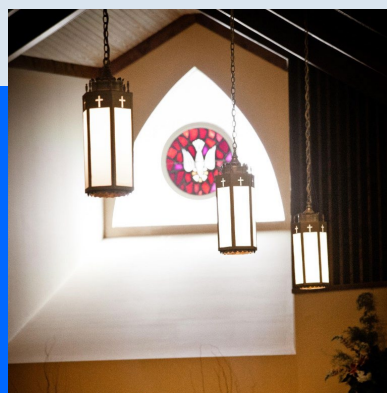
- Churches in this quadrant are sources of new meaning and purpose for their members. They may also serve as mentors to other churches.

Culture Description

Paraclete* Quadrant

Members of the church like to find familiar ways of doing things and stick with them. On average, the church is theologically more progressive. The combination of a settled approach to change and a more progressive theological perspective gives the church potential strengths that can include compassion, healing, and service to others. On the other hand, the church may find itself overly suspicious of religious experience. Without a commitment to transformation, it may also overcommit to meeting the needs of others to the extent that it suffers burnout and a loss of conviction about the difference it is making.

*The Greek word which, as a designation of the Holy Ghost, has been variously translated as advocate, intercessor, teacher, helper, comforter.



Strengths and Areas for Growth

As part of our self-study in preparation for this search, Emmanuel members and leaders identified our greatest strengths as well as our growing edges.

Our Greatest Strengths



Lay leadership

Campus (physical property)

Welcoming/Inclusive community

Taylor Outreach fund

Consistent and engaged members

Members highly involved in community

No debt

Strong sense of connectedness

Our Growing Edges

1

Attracting additional members

- Single
- Families
- Those with or without children

2

Converting high community visibility into church attendees/members

3

Mindful of serving community while not over burdening small congregation

4

Flexibility (Specifically as it relates to 1 and 2)

What we seek in a Rector

The kind of pastoral leadership we are looking for is a person who can serve as an “orchestra conductor.” This incorporates keeping an eye on all the parts of the church to keep them moving in sync with each other and in line with one vision while bringing out the best in the leadership already in place. Specifically, we seek the movement of the Holy Spirit in guiding our search process toward a person with these desired traits:

- Someone who can serve as a **connection/bridge in the local community**; a person who wants to understand the moving parts of Emmanuel and Winchester/Clark Co. We want to continue to be a welcoming and inclusive space. As we say in the Diocese of Lexington, we want to “Be the Church, Be the Change.”
- Someone who can lead us in **spiritual formation/education**, who encourages and enables us to be creative in how we engage in these practices. We know there are opportunities for worship and growth outside of the Sunday morning Eucharist.
- Someone with the gift of **pastoral care/preaching** feels of utmost importance in a small congregation. We look for someone who can engage and challenge us and provide spiritual support in times of need.

Closing

The people of Emmanuel look forward to weaving together our future with a new rector’s gifts and passions so that we may continue to “Be the Church. Be the Change.”

If you sense a possible call and would like to inquire further, please contact The Rev. Amy Chambers Cortright, Canon to the Ordinary (amyc@diolex.org).